



BROWN PAPER  
DECORATIVE LAMINATES

# DIGIMAX

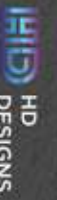


DIGITAL MAX

# DIGIMAX



BROWN PAPER  
DECORATIVE LAMINATES





HD  
DESIGNS

3D COLOUR  
DEPTH

HQ  
PRINT  
HIGH QUALITY  
PRINT



**BROWN PAPER**  
DECORATIVE LAMINATES

Welcome to our Brown Paper Stone Laminate Collection, where sophistication meets sustainability. At our core, we are passionate about crafting exquisite laminate surfaces that not only elevate your spaces but also contribute to a greener planet.

Our Brown Paper Stone Laminate Collection is a testament to our commitment to the environment. We draw inspiration from the natural beauty of brown paper stone, a material renowned for its earthy elegance. With meticulous attention to detail, we replicate its allure in every laminate sheet, allowing you to bring the wonders of nature into your interiors.

Our team of skilled artisans and designers combines creativity with cutting-edge technology to deliver laminate surfaces that are as durable as they are stunning. Whether you're designing a cozy home, a vibrant office, or a commercial space, our collection offers a versatile range of patterns and textures to suit your unique vision.

# DIGIMAX

THE MESMERIZING TOUCH  
OF THESE DESIGNS IS HERE TO  
ENCHANT ONE & ALL





# CHEVRON COLLAGE

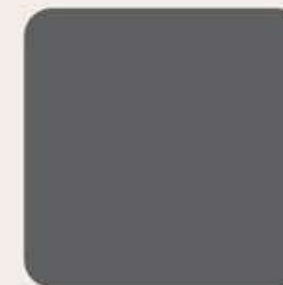
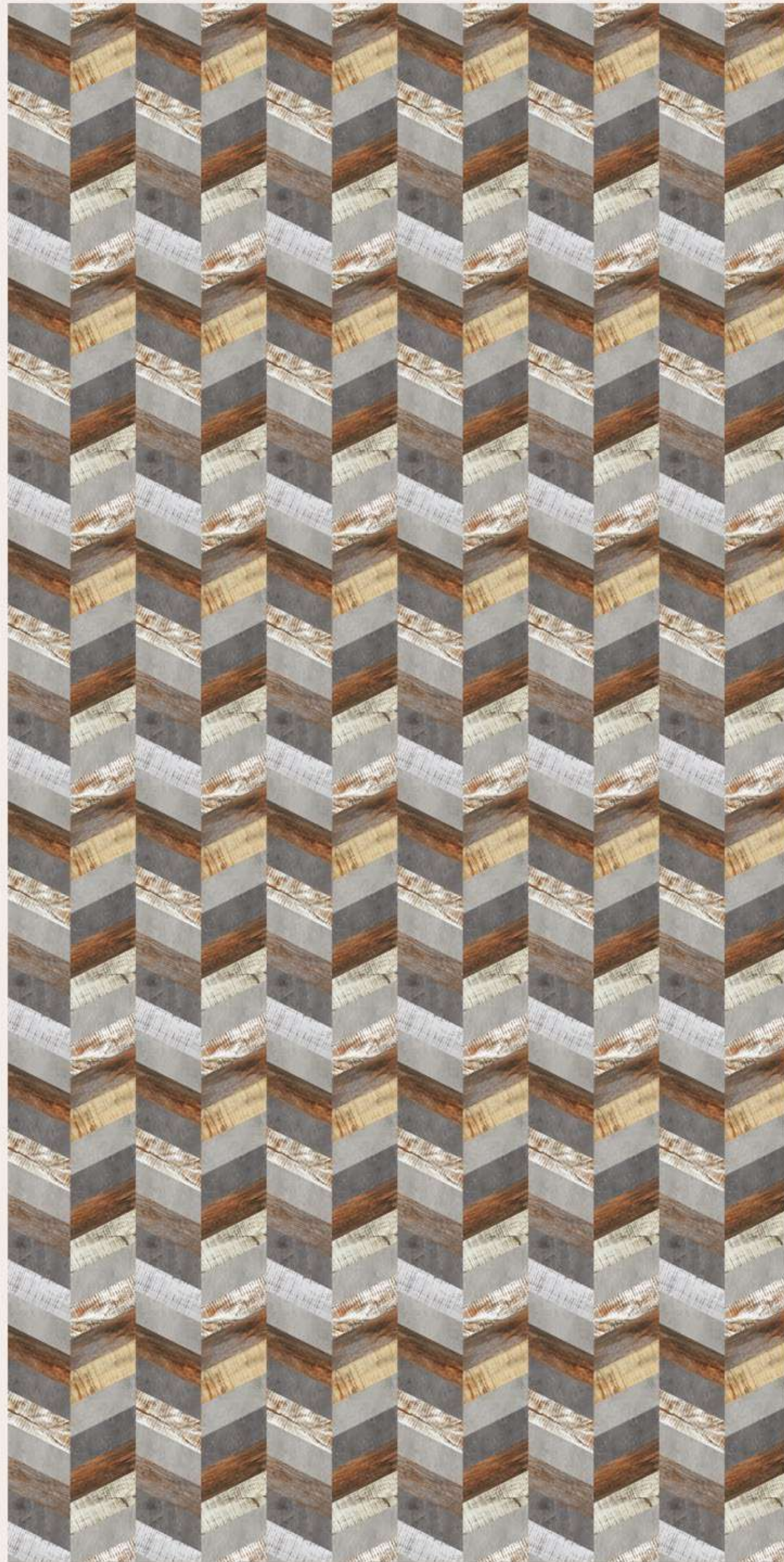
HD HD DESIGNS

3D COLOUR DEPTH

HQ PRINT HIGH QUALITY PRINT

BROWN PAPER  
DECORATIVE LAMINATES

FULL SHEET VIEW



4137 | A-155  
Charcoal Grey

DG-202 | A-118  
Chevron Collage



# INTERLOCK SEPIA

HD  
DESIGNS

3D  
COLOUR  
DEPTH

HQ  
PRINT  
HIGH QUALITY  
PRINT

BROWN PAPER  
DECORATIVE LAMINATES



8095 | A-155  
Burberry Blue



4142 | A-155  
Cappuccino

DG-203 | A-123  
Interlock Sepia

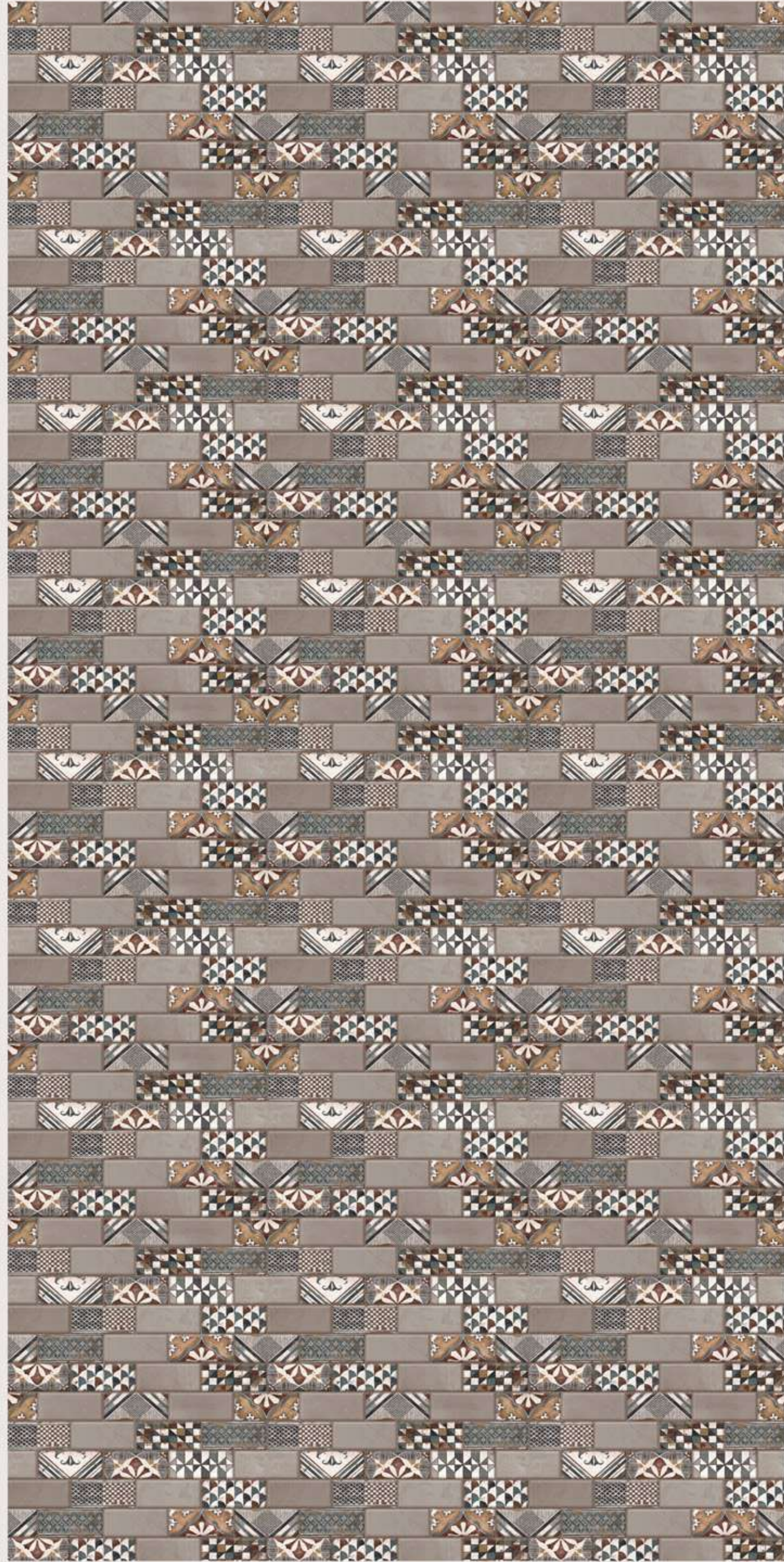


FULL SHEET VIEW





FULL SHEET VIEW



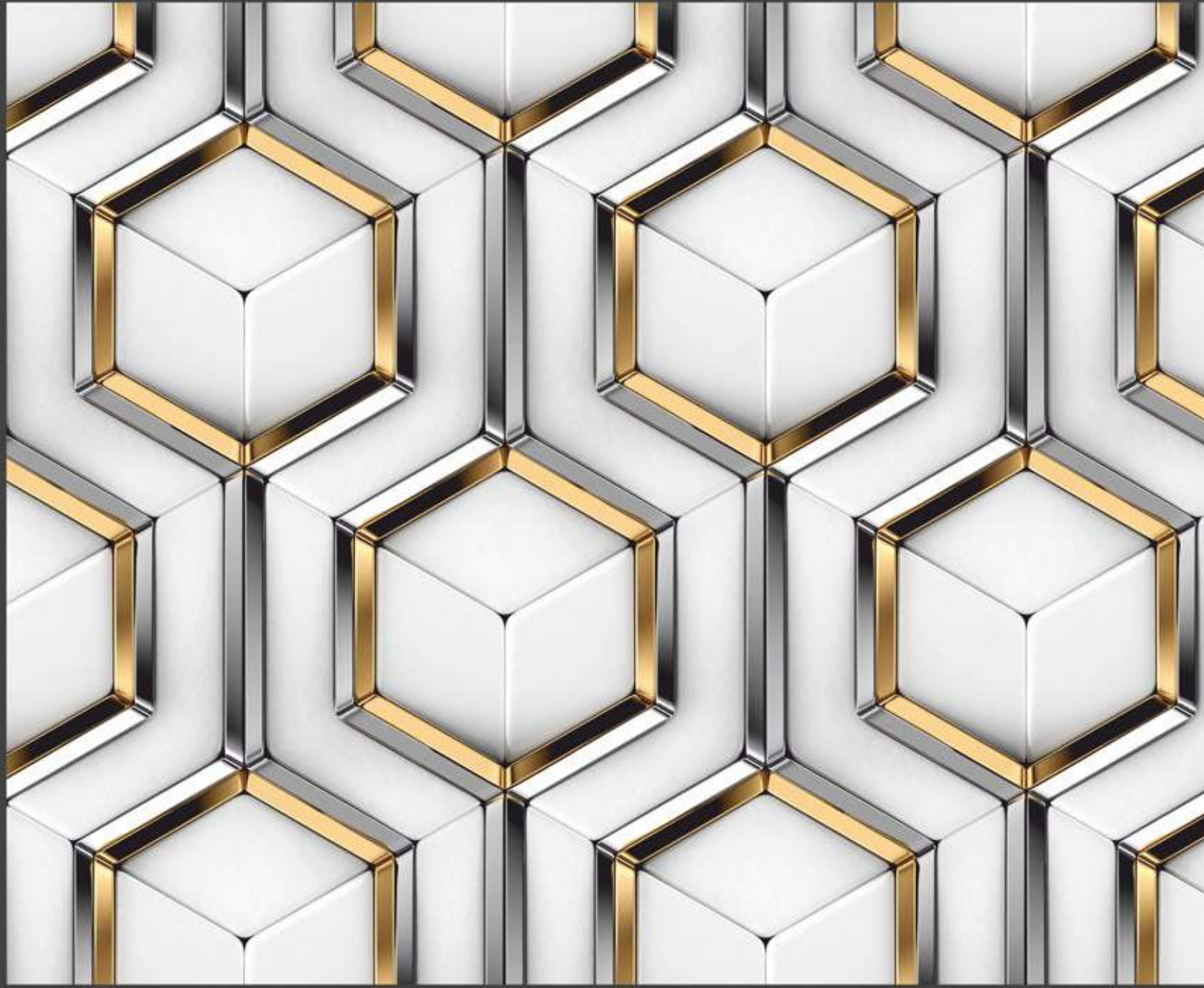
8090 | A-155  
Nutmeg



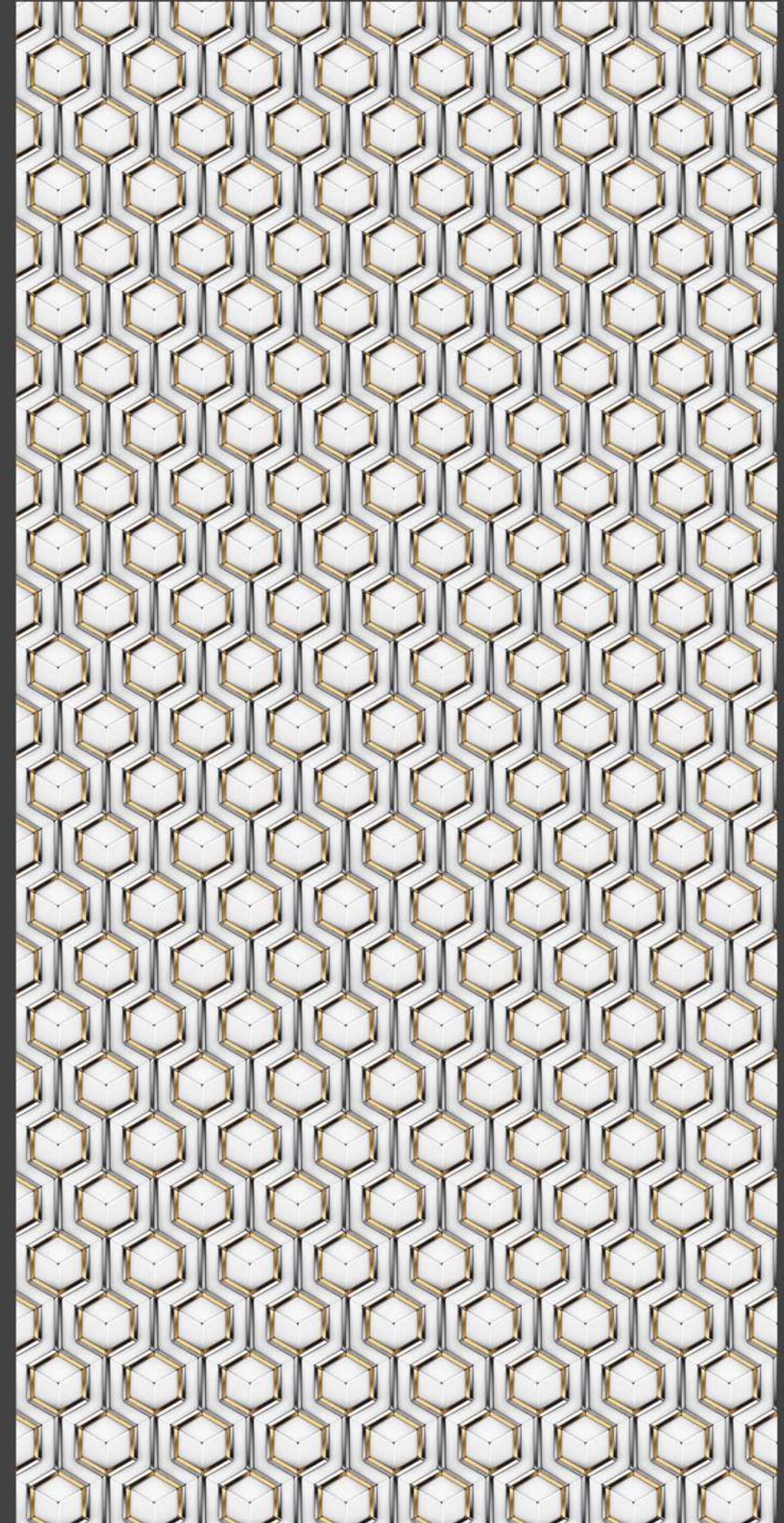
4122 | A-155  
Carbon Grey

DG-205 | A-164  
Moroccan Tiles





DG-201 | A-155  
3D Wall

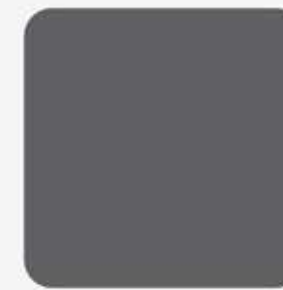
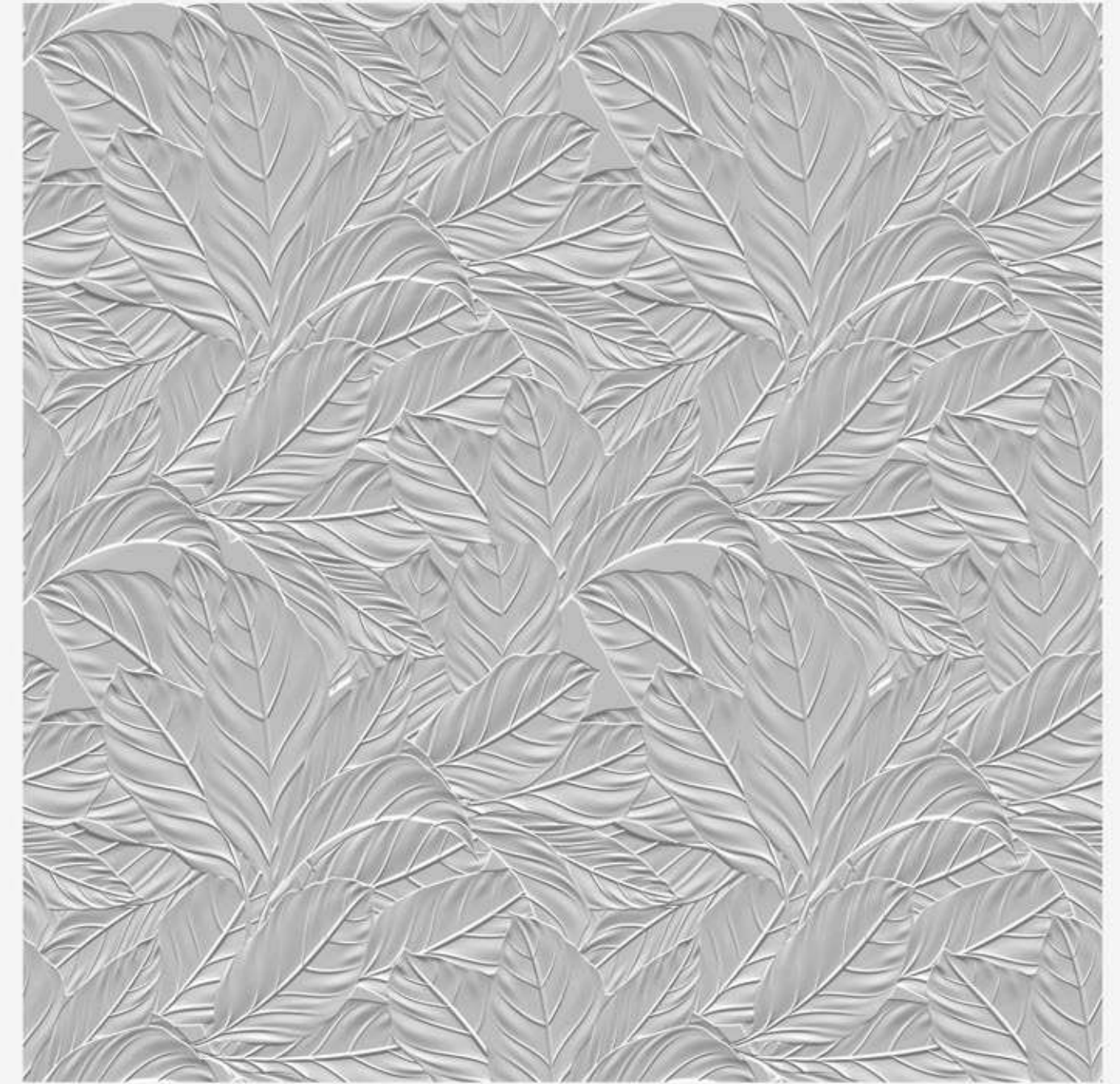
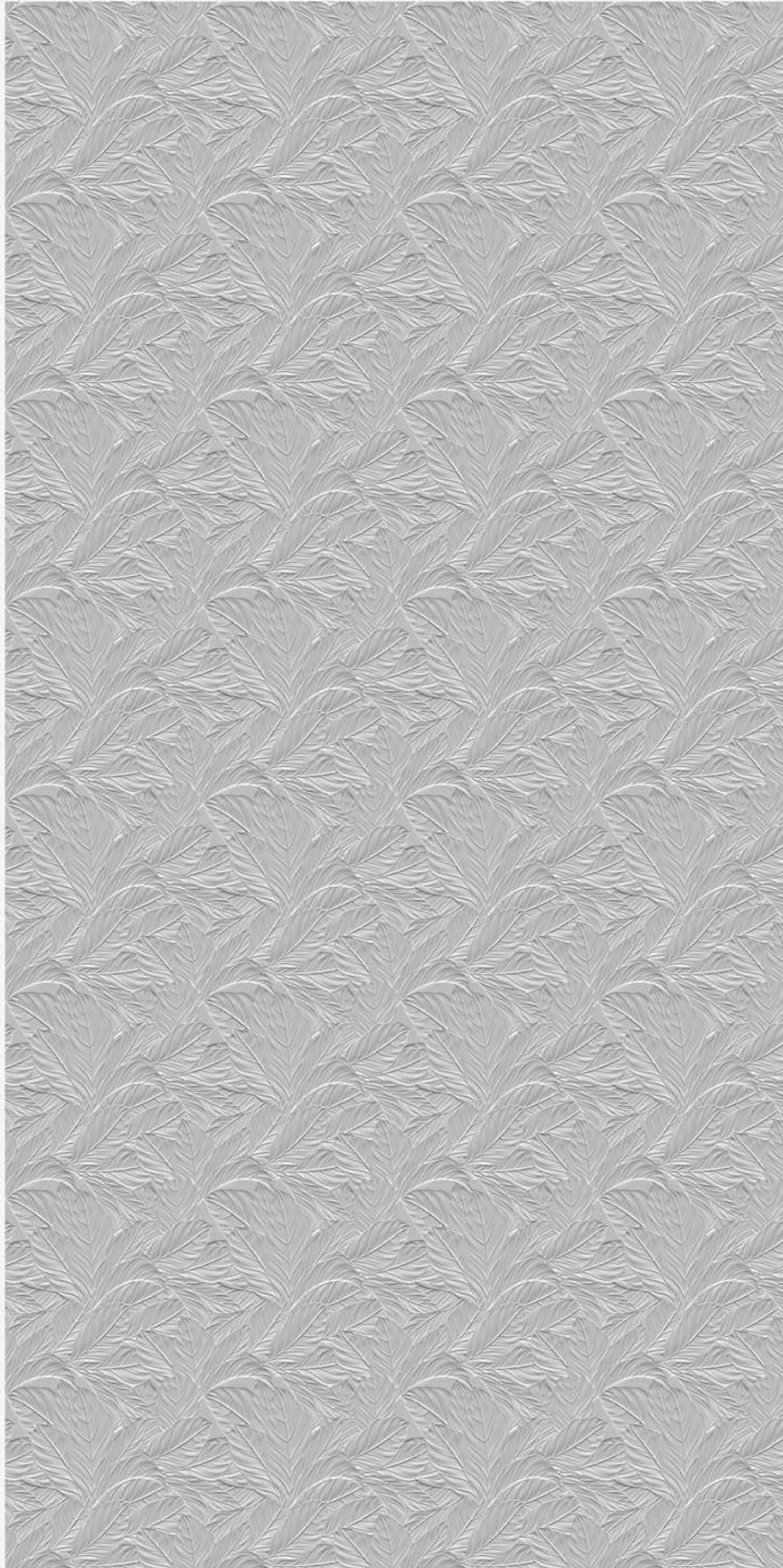


FULL SHEET VIEW





FULL SHEET VIEW



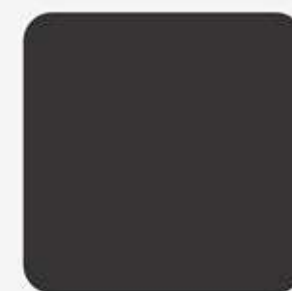
4137 | A-155  
Charcoal Grey

DG-643 | A-118  
3D Leaves





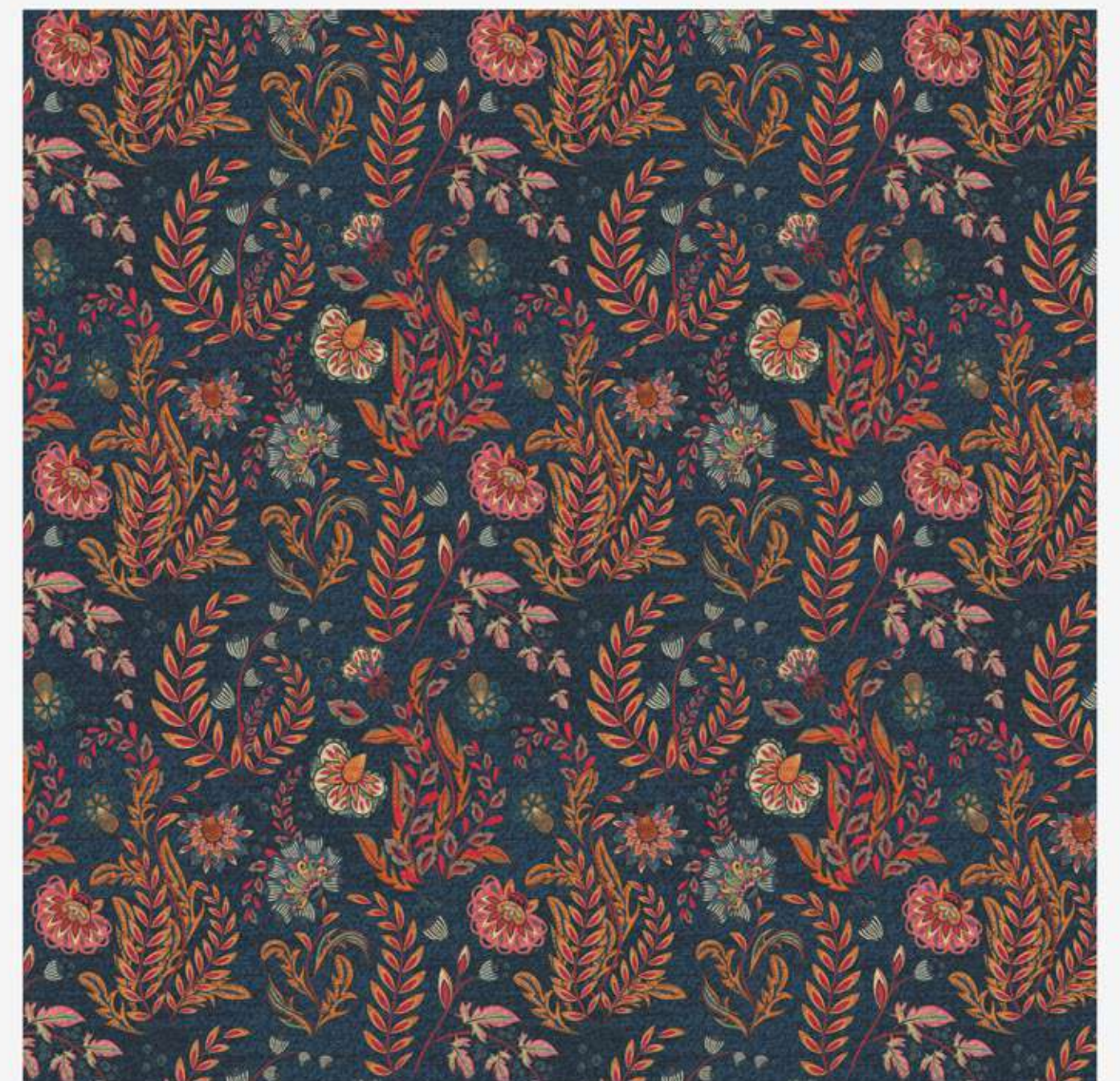
FULL SHEET VIEW



4051 | A-155  
Jet Black



8095 | A-155  
Burberry Blue



DG-600 | A-155  
Royal Fabric



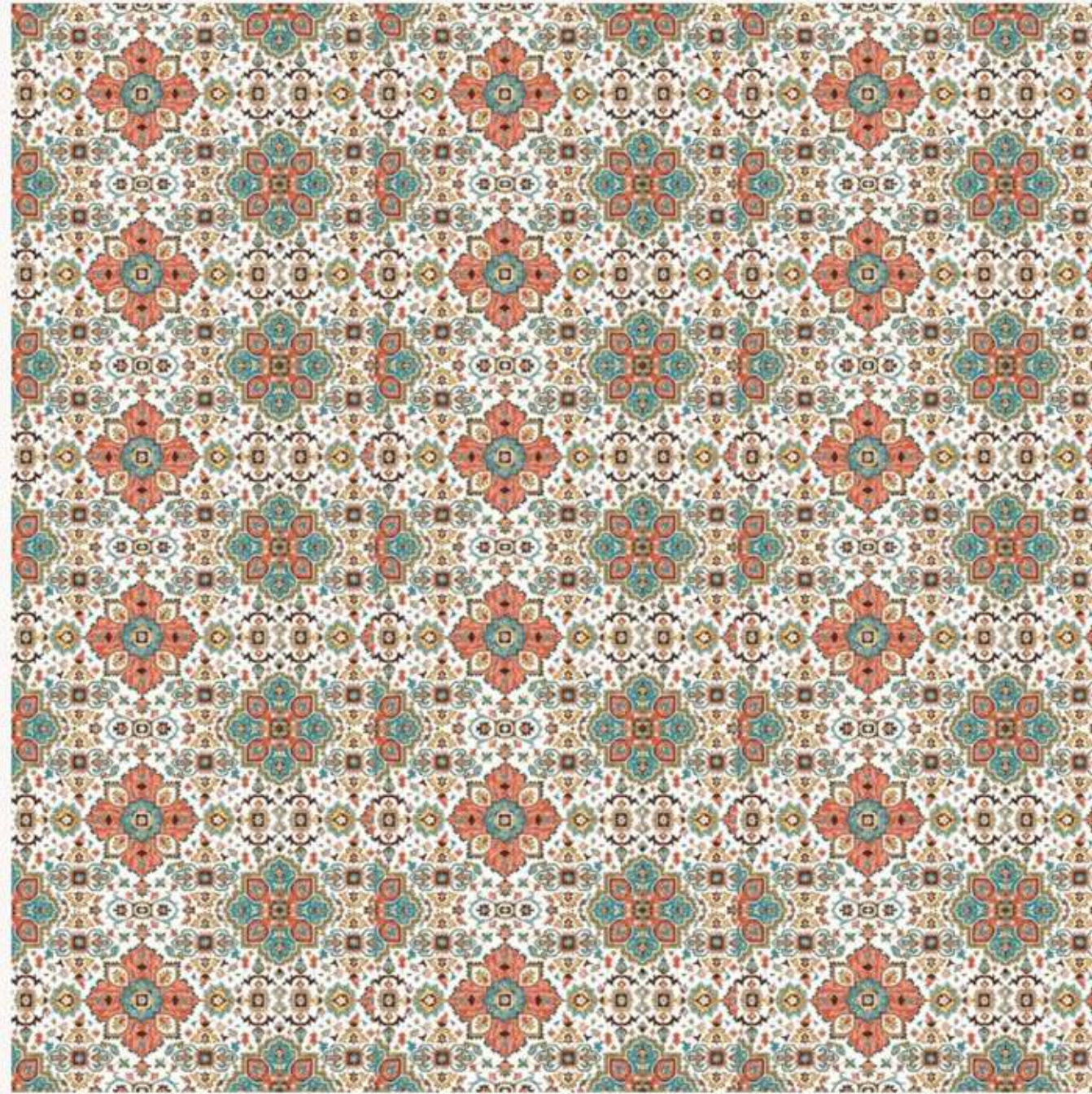
# FLORAL BLANCA

HD  
DESIGNS

3D  
COLOUR  
DEPTH

HQ  
PRINT  
HIGH QUALITY  
PRINT

BROWN PAPER  
DECORATIVE LAMINATES

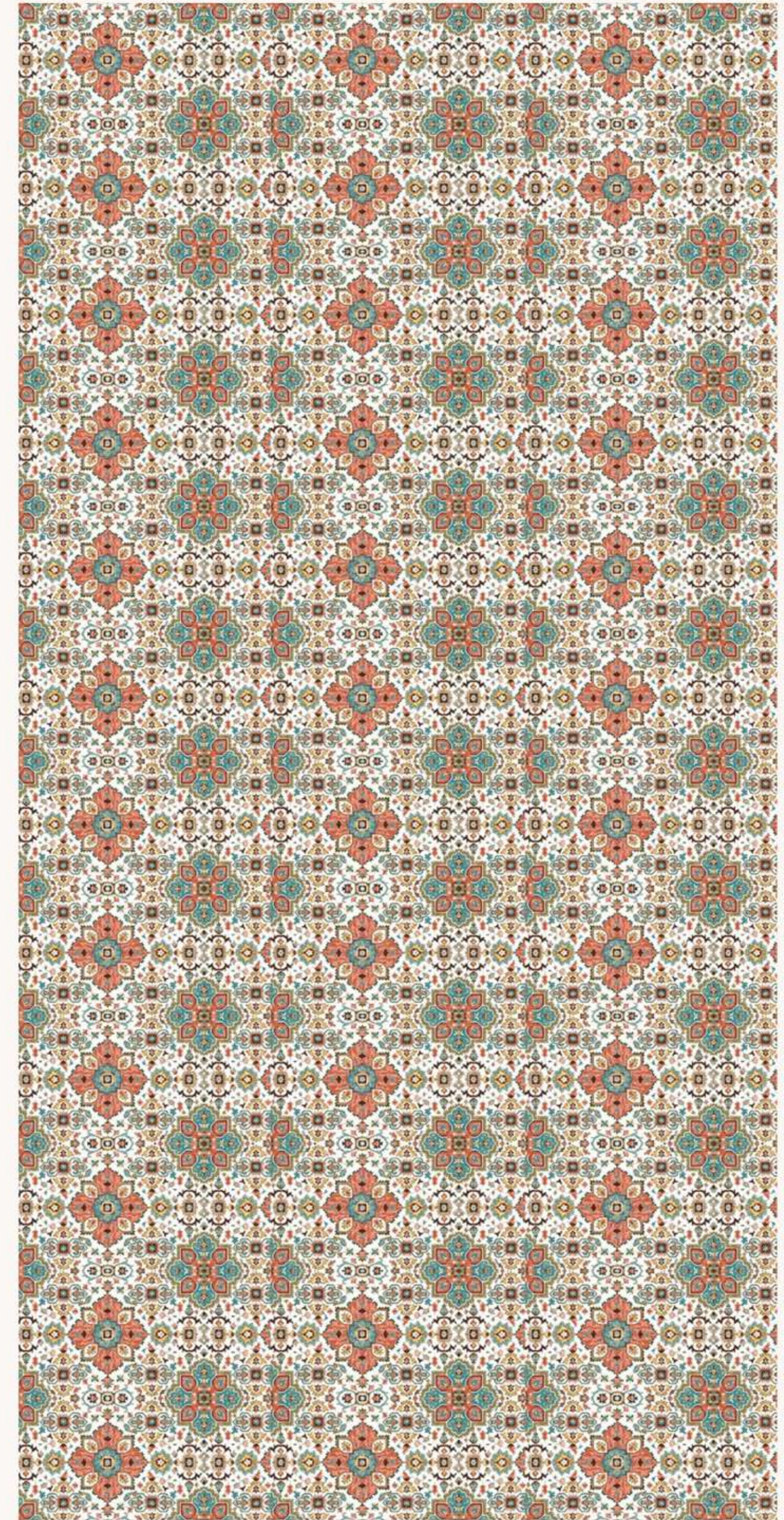


4141 | A-155  
Beige Brown



4142 | A-155  
Cappuccino

DG-208 | A-155  
Floral Blanca



FULL SHEET VIEW





# RUSTIC LASA

HD  
DESIGNS

3D COLOUR  
DEPTH

HQ  
PRINT  
HIGH QUALITY  
PRINT

BROWN PAPER  
DECORATIVE LAMINATES

FULL SHEET VIEW



8090 | A-155  
Nutmeg



4122 | A-155  
Carbon Grey



DG-206 | A-175  
Rustic Lasa





DG-207 | A-175  
Rustic Ore



8095 | A-155  
Burberry Blue



FULL SHEET VIEW





# RUSTIC CRACKED WALL

HD  
DESIGNS

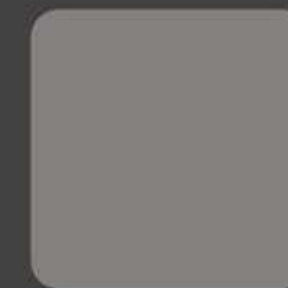
3D COLOUR  
DEPTH

HQ  
PRINT  
HIGH QUALITY  
PRINT

BROWN PAPER  
DECORATIVE LAMINATES



FULL SHEET VIEW



4122 | A-155  
Carbon Grey



DG-211 | A-164  
Rustic Cracked Wall





DG-204 | A-121  
Grey Emperor



4122 | A-155  
Carbon Grey



FULL SHEET VIEW







8091 | A-191  
Peach Brown

DG-210 | A-8  
Blanco Valencia





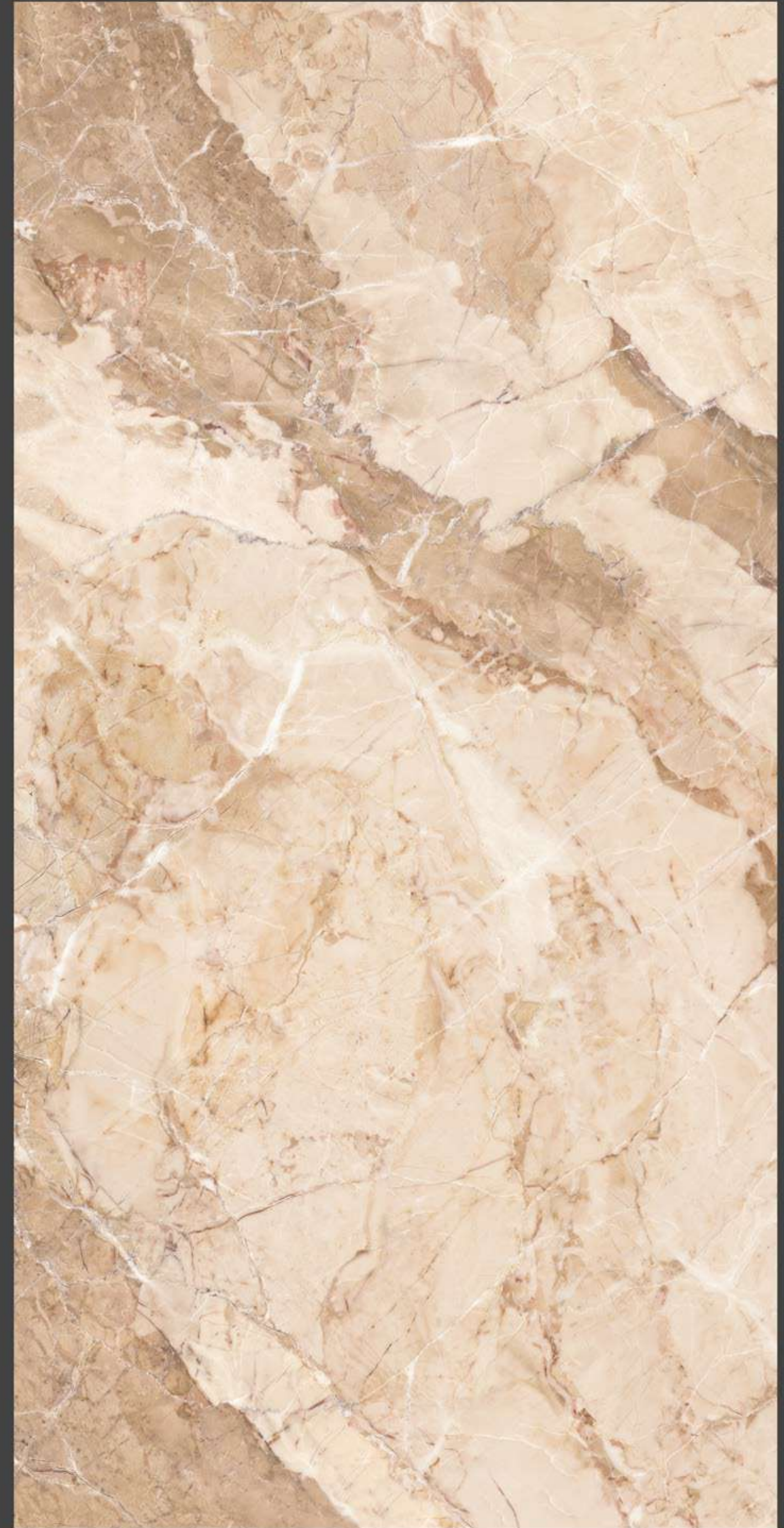
DG-645 | A-164  
Botticino Italian



4141 | A-155  
Beige Brown



4142 | A-155  
Cappuccino



FULL SHEET VIEW





FULL SHEET VIEW



4154 | A-155  
Pebble Grey

DG-212 | A-155  
Glitter Marble





FULL SHEET VIEW



4137 | A-155  
Charcoal Grey



8090 | A-155  
Nutmeg



DG-644 | A-155  
Pacific Grey





DG-602 | A-8  
Calacatta Gold



DG-602 | A-121  
Calacatta Gold



FULL SHEET VIEW





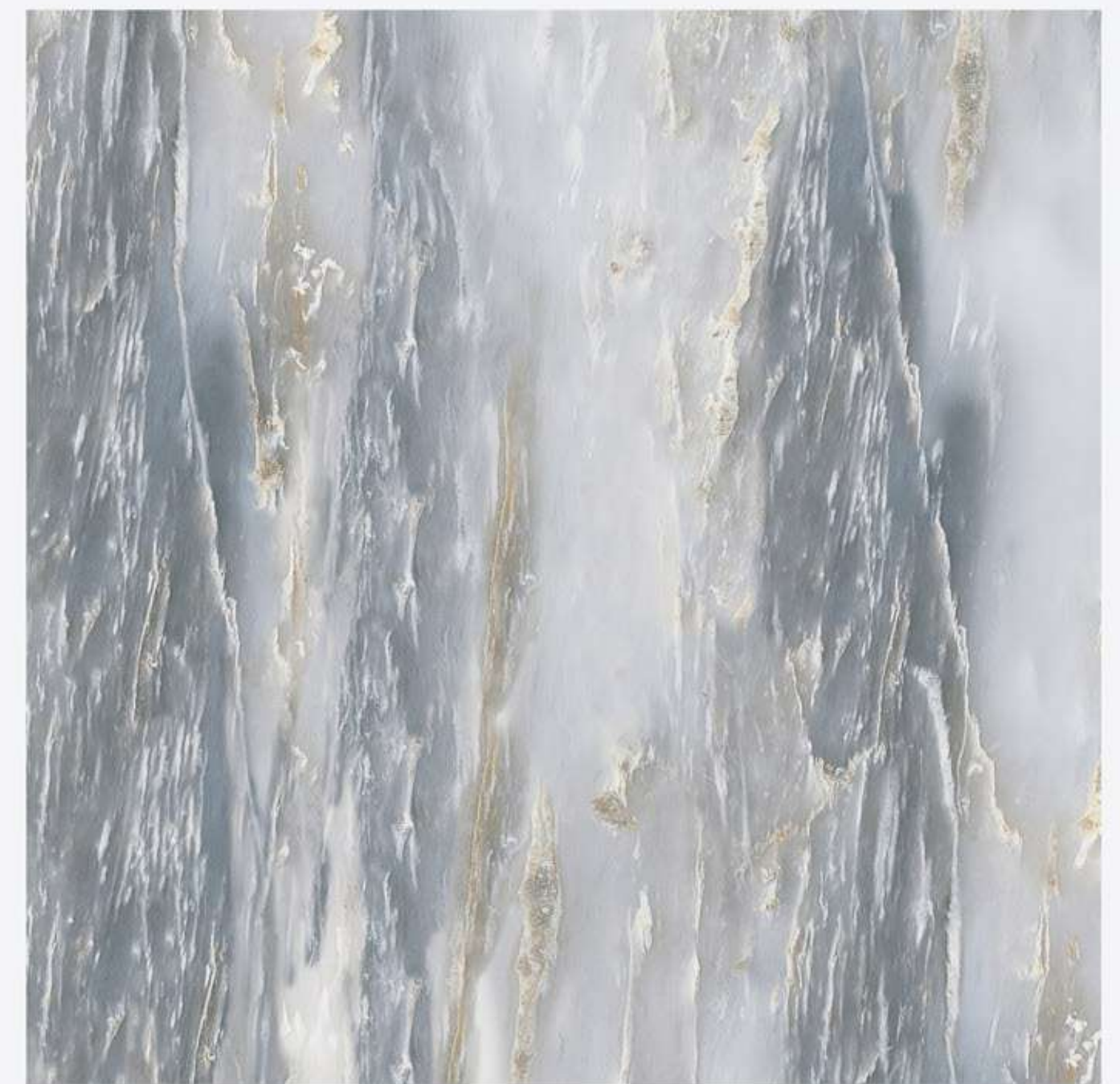
FULL SHEET VIEW



8089 | A-155  
Desire Blue



8094 | A-155  
Petrol Blue



DG-209 | A-8  
Blue Cenia

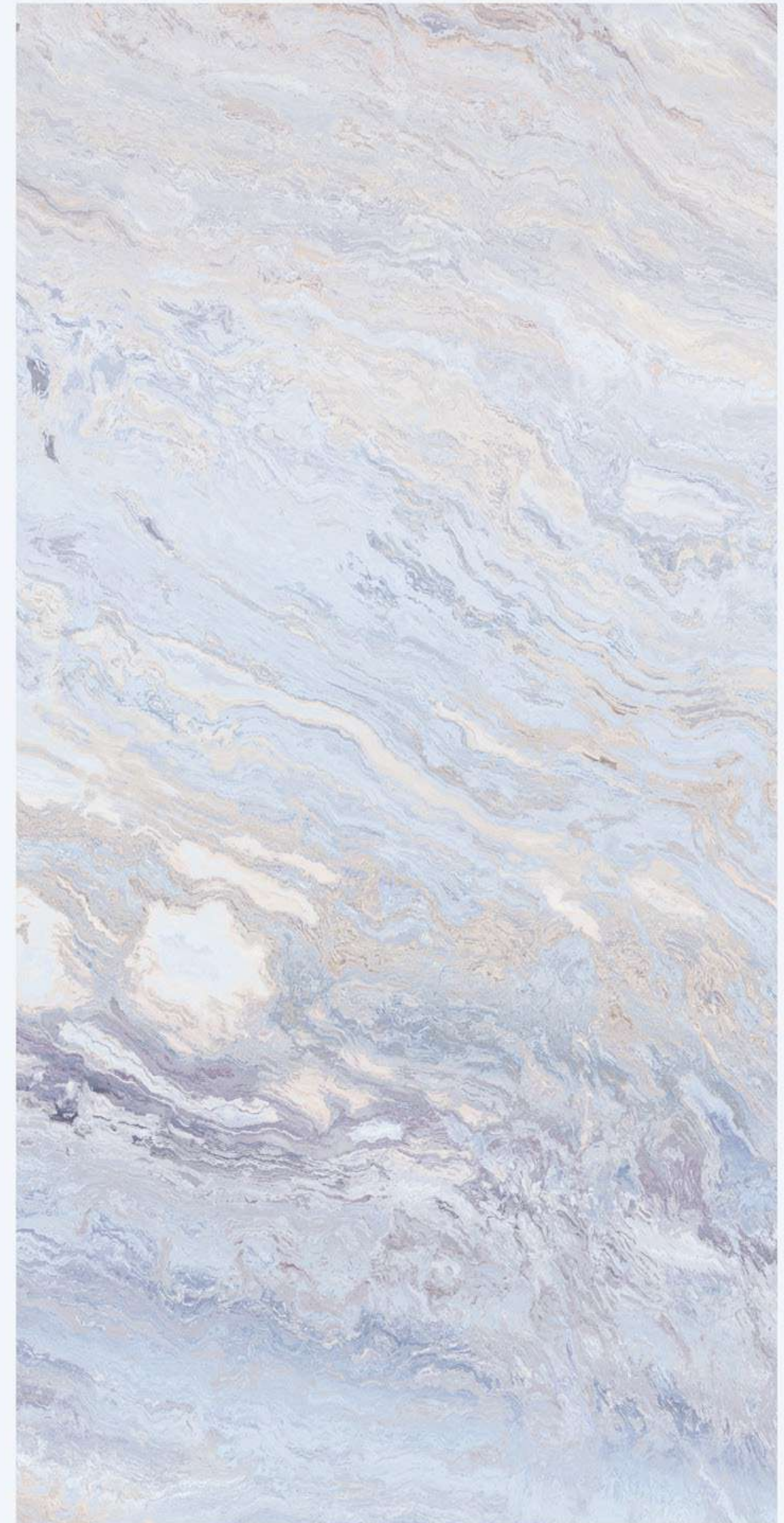




DG-608 | A-121  
Crystal Blue



4154 | A-155  
Pebble Grey



FULL SHEET VIEW





# MARQUINA BLACK

HD HD DESIGNS

3D COLOUR DEPTH

HQ PRINT HIGH QUALITY PRINT

FULL SHEET VIEW



BROWN PAPER  
DECORATIVE LAMINATES



BR 4003 | A-155  
Warm White



DG-606 | A-155  
Marquina Black



DG-606 | A-175  
Marquina Black

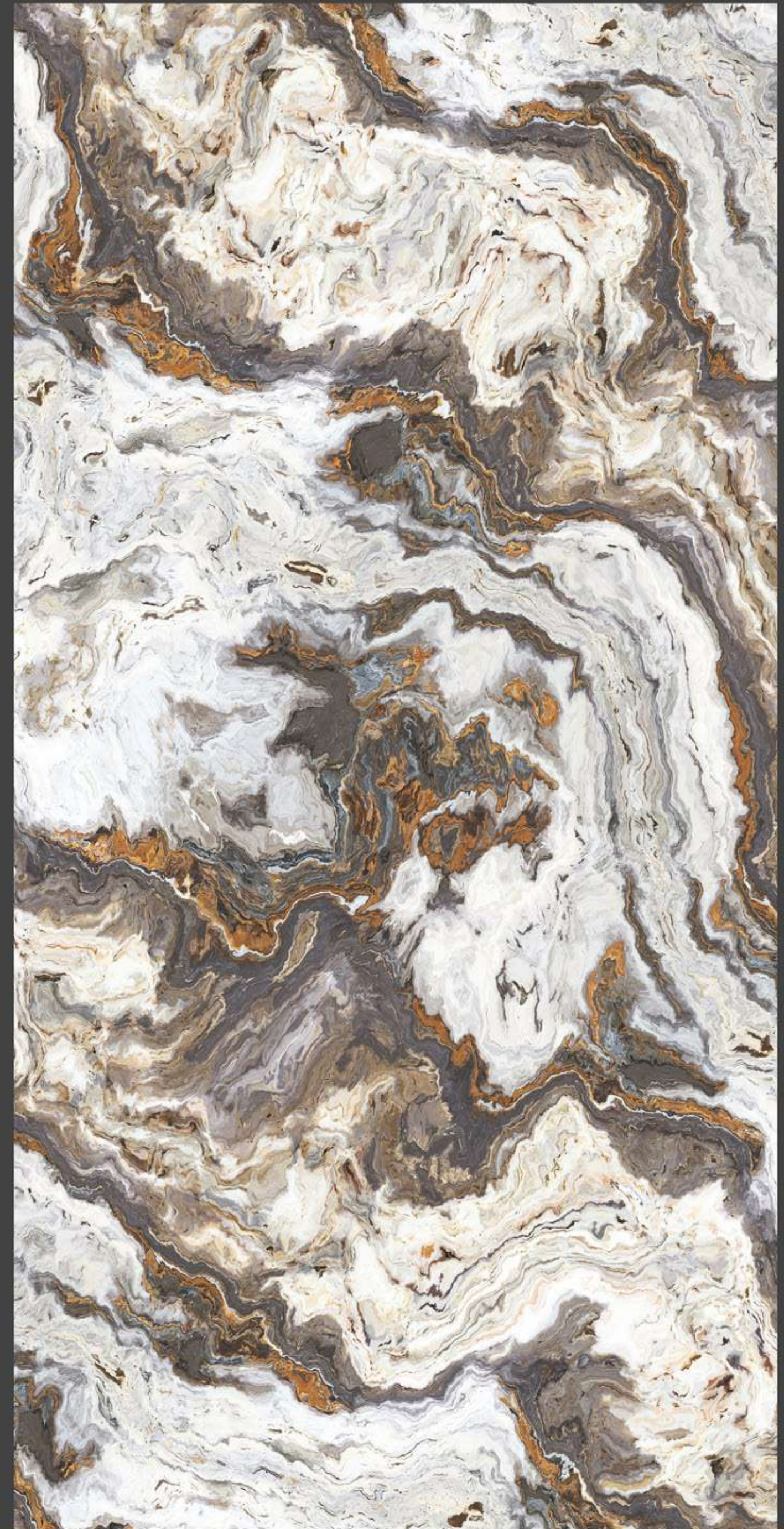




DG-618 | A-151  
Emperor Desert



4137 | A-155  
Charcoal Grey



FULL SHEET VIEW





FULL SHEET VIEW



8095 | A-155  
Burberry Blue



DG-615 | A-155  
Ice Blue



FULL SHEET VIEW



DG-609 | A-155  
Blue Damasco



DG-609 | A-121  
Blue Damasco



8094 | A-155  
Petrol Blue







DG-614 | A-155  
Lapis Marble



FULL SHEET VIEW



4051 | A-155  
Jet Black



FULL SHEET VIEW



8090 | A-155  
Nutmeg



DG-611 | A-155  
White Creck Stone



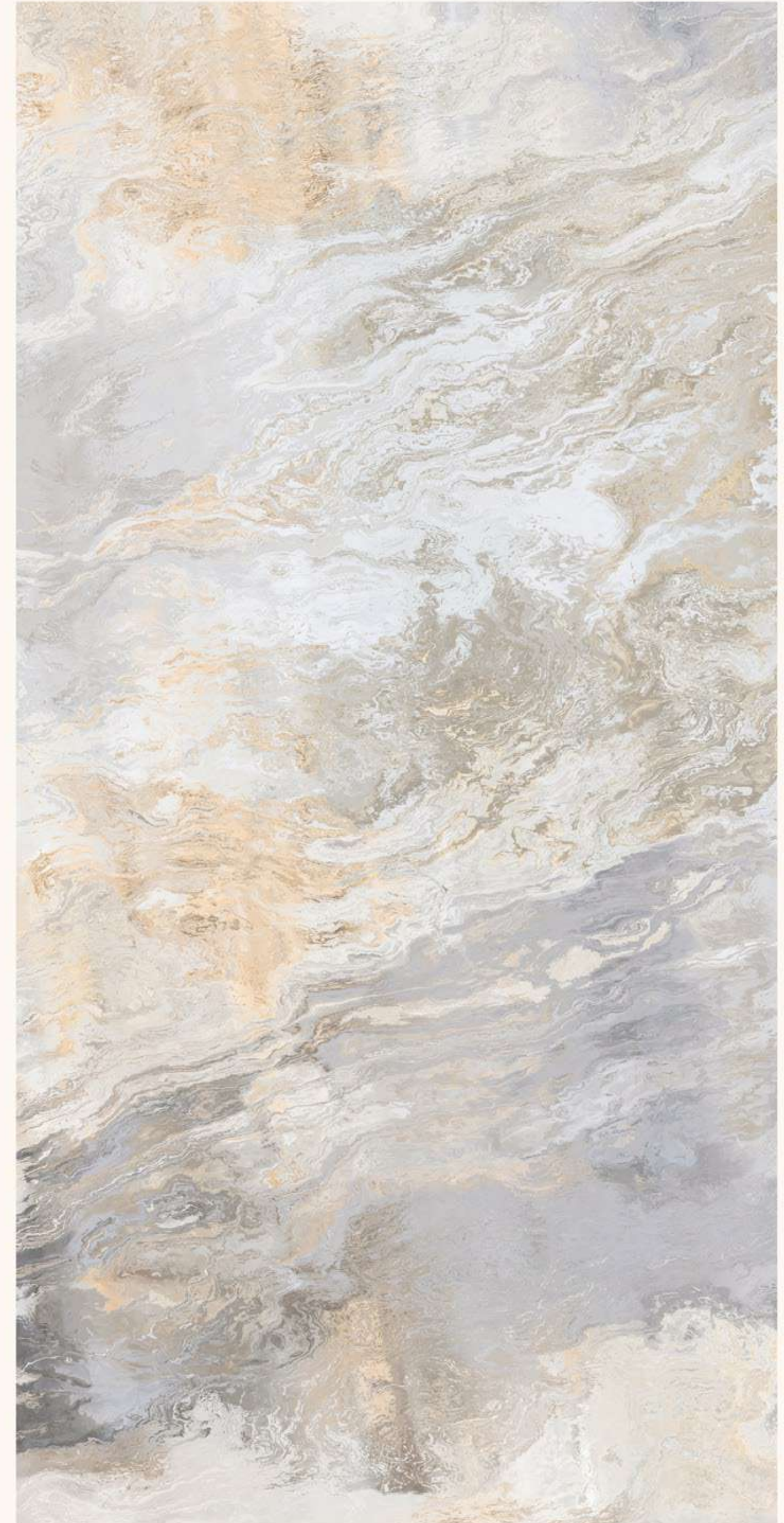
DG-611 | A-175  
White Creck Stone





DG-616 | A-121  
Desert Snow

4154 | A-155  
Pebble Grey



FULL SHEET VIEW





FULL SHEET VIEW



DG-619 | A-121  
Iceberg Sand



# CARARA BLUE

HD  
DESIGNS

3D  
COLOUR  
DEPTH

HQ  
PRINT  
HIGH QUALITY  
PRINT

BROWN PAPER  
DECORATIVE LAMINATES



DG-620 | A-121  
Carara Blue



DG-620 | A-8  
Carara Blue



FULL SHEET VIEW





# ICE BLUE FLOWER

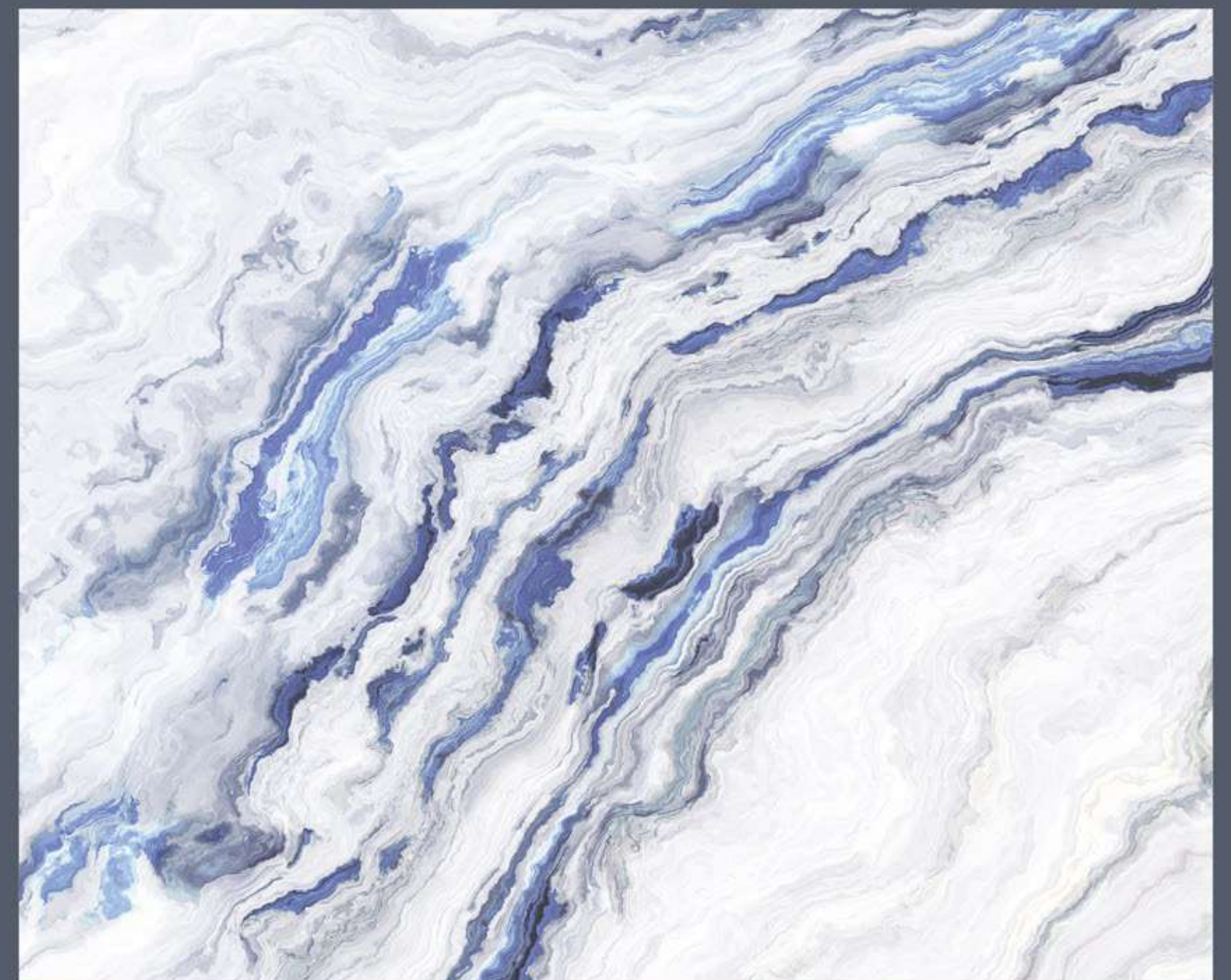
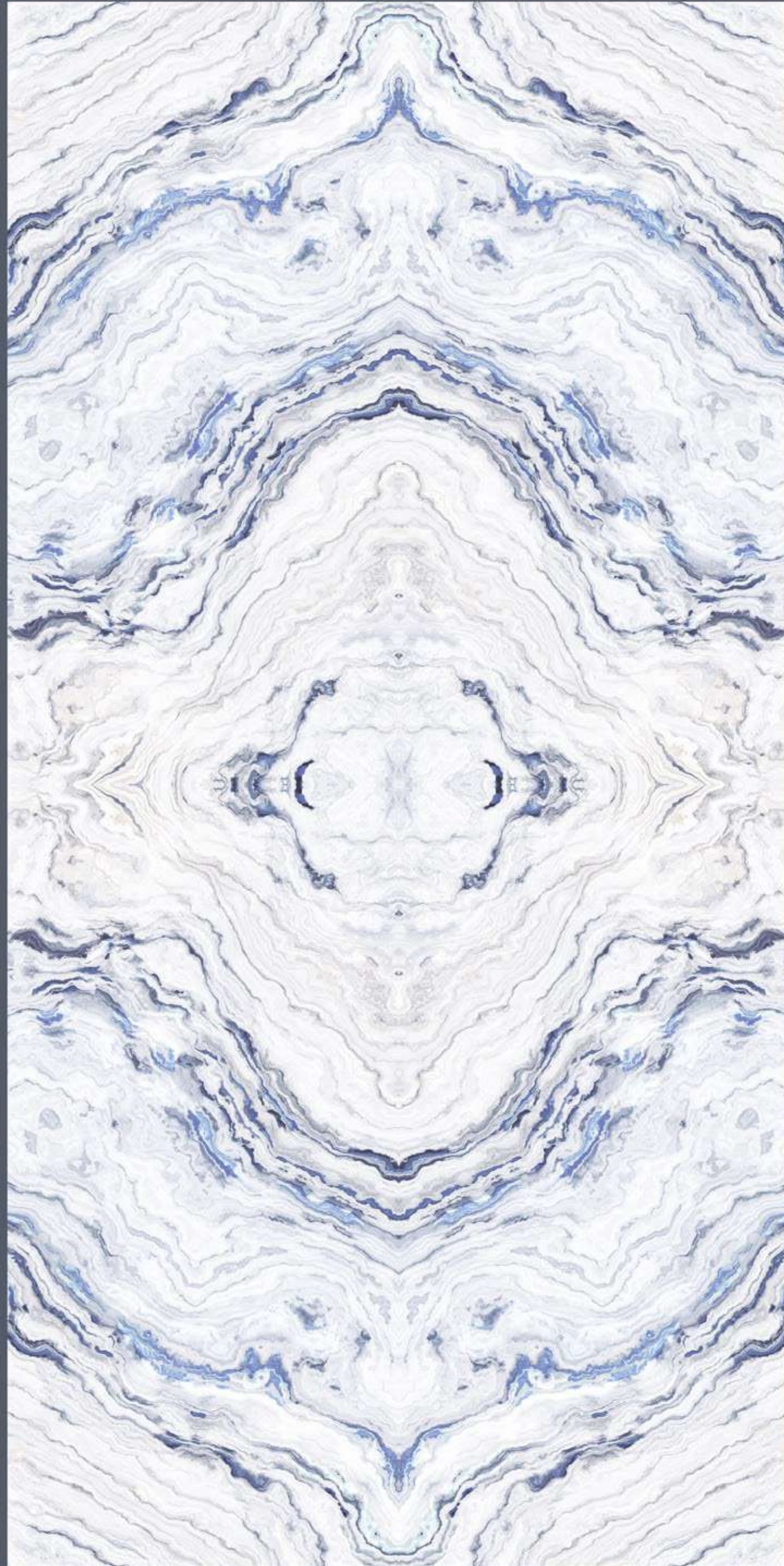
HD  
DESIGNS

3D COLOUR  
DEPTH

HQ  
PRINT  
HIGH QUALITY  
PRINT

BROWN PAPER  
DECORATIVE LAMINATE

FULL SHEET VIEW



DG-613 | A-151  
Ice Blue Flower



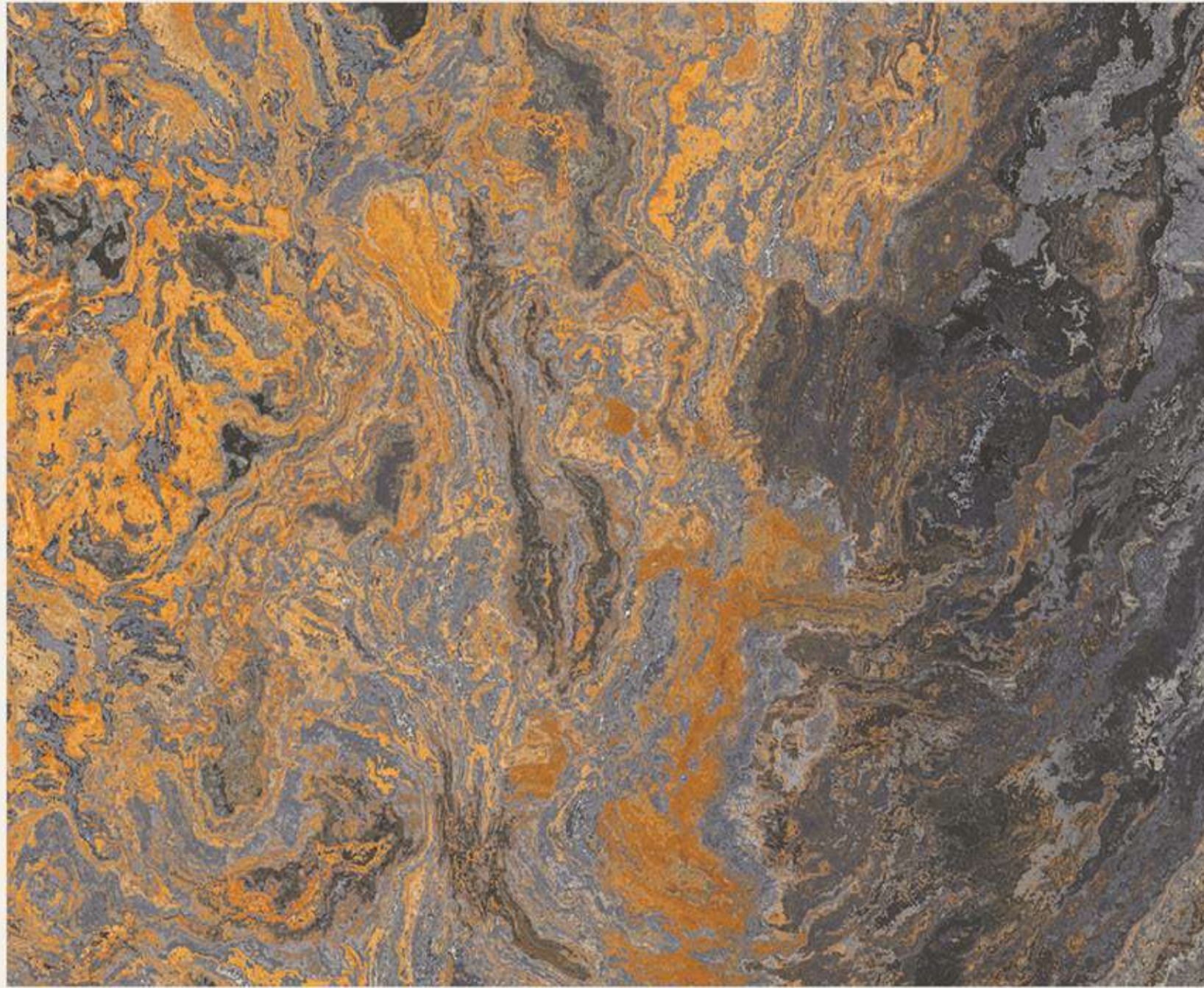
# BLACK MIRAGE FLOWER

HD  
DESIGNS

3D  
COLOUR  
DEPTH

HQ  
PRINT  
HIGH QUALITY  
PRINT

BROWN PAPER  
DECORATIVE LAMINATES



DG-605 | A-121  
Black Mirage Flower



FULL SHEET VIEW







DG-201 | A-155  
3D Wall 08



DG-202 | A-118  
Chevron Collage 02



DG-203 | A-123  
Interlock Sepia 04



DG-615 | A-155  
Ice Blue 42



DG-616 | A-121  
Desert Snow 50



DG-618 | A-151  
Emperor Desert 40



DG-204 | A-121  
Grey Emperor 22



DG-205 | A-164  
Moroccan Tiles 06



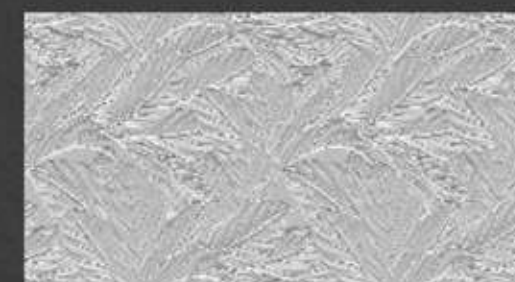
DG-206 | A-175  
Rustic Lasa 16



DG-619 | A-121  
Iceberg Sand 52



DG-620 | A-121  
Carara Blue 54



DG-643 | A-118  
3D Leaves 10



DG-207 | A-175  
Rustic Ore 18



DG-208 | A-155  
Floral Blanca 14



DG-209 | A-8  
Blue Cenia 34



DG-644 | A-155  
Pacific Grey 30



DG-645 | A-164  
Botticino Italian 26



DG-210 | A-8  
Blanco Valencia 24



DG-211 | A-164  
Rustic Cracked Wall 20



DG-212 | A-155  
Glitter Marble 28



DG-600 | A-155  
Royal Fabric 12



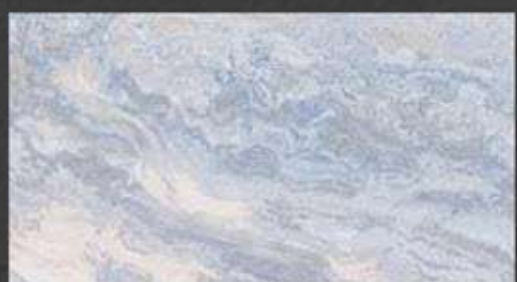
DG-602 | A-8  
Calacatta Gold 32



DG-605 | A-121  
Black Mirage Flower 58



DG-606 | A-155  
Marquina Black 38



DG-608 | A-121  
Crystal Blue 36



DG-609 | A-155  
Blue Damasco 44



DG-611 | A-155  
White Creck Stone 48



DG-613 | A-151  
Ice Blue Flower 56



DG-614 | A-155  
Lapis Marble 46

## TECHNICAL SPECIFICATION

लेमिनेट शीट चिपकाते समय निम्न सावधानियाँ रखनी चाहिए ।

- लेमिनेट शीट लगाते समय यह जाँच ले कि सभी शीट्स का रंग एवं डीजाईन एक समान है।
- लेमिनेट शीट का बड़ा टुकड़ा (Piece) लगाते समय अत्यधिक सावधानी बरतें।
- लेमिनेट शीट को 90° में काट कर चिपकाने से CRACK आने की संभावना रहती है।
- ADHESIVE उच्च क्वालिटी का ही काम में लें।
- अत्यधिक नमी के स्थान पर लेमिनेट्स शीट पर BUBBLES आने की संभावना रहती है।
- लेमिनेट शीट चिपकाते वक्त कम दबाव के कारण भी शीट खुलने की संभावना रहती है।
- जहाँ सूर्य की किरणें सिधी आती हों वहाँ लेमिनेट शीट का उपयोग कम से कम करें - यह रंग को धुँवला कर सकता है।
- लेमिनेट शीट के रख-रखाव करते समय इस पर किसी प्रकार के रसायन पदार्थ का प्रयोग न करें। घर में रंग-रोगन करते समय फर्नीचर को ढक दें।
- लेमिनेट शीट का ROLL खोल कर रखें।
- लेमिनेट शीट को सीधे रख कर काटें।
- अधिक से अधिक स्थान पर TAPE (MASKING TAPE) का उपयोग करें।

अच्छा सावधानी से ध्यान में रखकर लेमिनेट को काम में लेने पर कभी समस्याओं का खतरा ही सम्भल मिल सकता है।

Grades : General and fire retardant [FR]  
Types : Standard, post forming, compact, cabinet liners, backer  
Size : 2440 mm x 1220 mm [8'x4']

Properties	Unit	Specified value as per IS		Observed Typical Value
		2046:1995	Type 5,HGS	
Thickness	mm	0.8 MM ± 0.10MM		0.82
Length	mm	2440 mm + 10mm/-0mm		2442
Width	mm	1220 mm + 10mm/-0mm		1222
Resistance to surface wear	Revolution	350 (Min.)		400
Resistance to dry Heat	Grade	Not worse than 4		5
Resistance to immersion in boiling water				
a) Mass increase	%	12.0 (Max.)		6.85
b) Thickness increase	%	14.5 (Max.)		7.73
c) Appearance	Grade	Not worse than 4		5
Dimensional stability at deviated temperature				
a) Longitudinal	%	0.67 (Max.)		0.26
b) Transverse	%	1.15 (Max.)		0.53
Dimensional stability at 20 C				
a) Longitudinal	%	0.42 (Max.)		0.18
b) Transverse	%	0.70 (Max.)		0.28
Resistance to impact by small diameter ball	Newton	20 (Min.)		25
Resistance to cracking	Grade	Not worse than 4		5
Resistance to scratching	Newton	2.0 (Min.)		2.5
Resistance to staining				
a) Group 1 & 2	Grade	Not worse than 5		5
b) Group 3 & 4	Grade	Not worse than 4		5
Resistance to colour change				
a) In Xenon arc light	Grade	Not worse than 6		6
b) In enclosed Carbon arc light	Grade	Not worse than 5		5
Resistance to steam	Grade	Not worse than 4		5
Appearance	----	Should be free from foreign particle		complies

Care & Maintenance : Cleaning should be carried out with a soft moist cloth and warm soap solution. Do not use detergents containing abrasive particle or excess soda.

Highlight:

- Design from genuine imported base paper.
- Manufactured using best quality kraft paper.
- Use of best chemical raw materials for better flexibility & durability.

Disclaimer: Customers are advised to reconfirm selected laminate when placing orders as our liability does not include claims arising from sample chip pasting error. Samples presented are indicative of color, pattern and surface finish but not of actual thicknesses. All metallic patterns series recommended for vertical application only. Limited Warranty: Company warrants that its products are reasonably free from manufacturing defects. The products when properly used, will comply, with normal deviation, related manufacturing specifications. This warranty shall be limited only to the original buyer for a period of care. It is recommended that the products must be inspected prior to installation and our liability will be limited to the extent of the cost of the products only. Our products are used for various applications without the possibility of control over the manufacturing of the finished products. The Company does not assume obligations or liabilities arising from the furnishing, sale, installation or repair, use or subsequent sale of any product, to any person or entity.

Do not use nail and hammer while cutting such Corner, Grew, Angle, and Designs.  
Use only drill while cutting such Corner, Grew, Angle and Designs.







**BROWN PAPER**  
DECORATIVE LAMINATES

 **ACE MICA**  
Decorative Laminates



[www.acemica.com](http://www.acemica.com)